



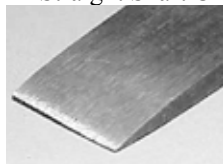
Henry Taylor Tools

We stock approximately 800 individual gouges in sizes from 3/32" to 2-1/2" wide sweeps (curvature of cutting edge) with #1 being a straight edge, a #3 being a very shallow edge, through #11 being a deep veiner. We stock straight shaft, fishtails, long and short bent spoon gouges, macaroni and backbent gouges. Call for specific shapes and information. **Taylor gouges do not come presharpenerd from the factory.**



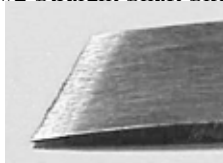
#1 #3 #5 #6 #8 #9 #11

#1 Straight Shaft Chisel



Item #	Size	Price
3701	1/8"	\$31.00
3701	1/4"	31.25
3701	1/2"	32.50
3701	1"	34.75

#2 Straight Shaft Skew Chisel



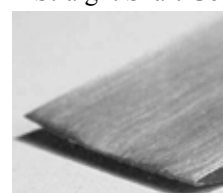
Item #	Size	Price
3702	1/8"	\$31.00
3702	1/4"	31.25
3702	3/8"	32.00
3702	1/2"	32.50
3702	3/4"	33.50

#3 Straight Shaft Gouge



Item #	Size	Price
3703	1/4"	\$32.00
3703	1/2"	33.25
3703	3/4"	34.00
3703	1"	35.00

#4 Straight Shaft Gouge



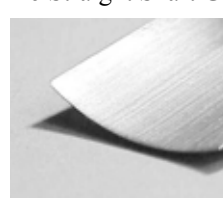
Item #	Size	Price
3704	3/16"	\$31.25
3704	3/8"	32.50
3704	1"	35.00

#5 Straight Shaft Gouge



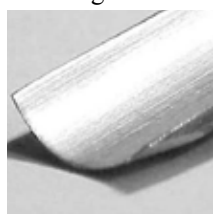
Item #	Size	Price
3705	1/4"	\$32.50
3705	3/8"	33.25
3705	1/2"	33.50
3705	3/4"	34.75

#6 Straight Shaft Gouge



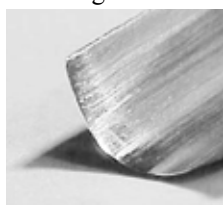
Item #	Size	Price
3706	3/8"	\$34.00
3706	1/2"	34.50
3706	1"	37.75

#7 Straight Shaft Gouge



Item #	Size	Price
3707	1/4"	\$34.00
3707	3/8"	34.50
3707	1/2"	35.00
3707	3/4"	36.75
3707	1"	42.00

#8 Straight Shaft Gouge



Item #	Size	Price
3708	1/4"	\$34.50
3708	3/8"	34.25
3708	1/2"	35.75
3708	3/4"	37.00
3708	1"	43.00

#9 Straight Shaft Gouge



Item #	Size	Price
3709	1/8"	\$34.00
3709	1/4"	36.25
3709	3/8"	36.50
3709	1/2"	37.50
3709	3/4"	39.50
3709	1"	43.75

#11 veiner



Item #	Size	Price
3711	1/16"	\$31.25
3711	1/8"	34.50
3711	3/16"	35.00
3711	1/4"	35.75
3711	3/8"	37.00
3711	1/2"	37.75
3711	5/8"	39.25
3711	3/4"	39.25
3711	1"	48.00

#14 Long Bent Gouge



Item #	Size	Price
3714	1/4"	\$34.75
*3714 #4	1-1/4"	51.75
*3714 #5	1-1/4"	51.75
*3714 #5	1-1/2"	57.00

* for carving bowls

#16 Long Bent Gouge



Item #	Size	Price
3716	1/8"	\$35.75
3716	1/4"	37.25
3716	1/2"	38.00
*3717 #8	1-1/2"	57.00

* for carving bowls

Henry Taylor Tools



#21 Spoon Gouge



Item #	Size	Price
3721	3/8"	\$32.50
3721	1/2"	33.25
3721	3/4"	34.25

#26 Spoon Gouge



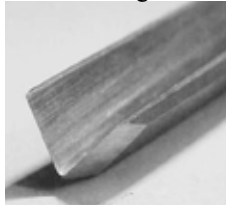
Item #	Size	Price
3726	1/8"	\$32.50
3726	1/4"	33.25
3726	3/8"	34.00
3726	1/2"	34.50
3726	1"	36.00

#28 Spoon Gouge



Item #	Size	Price
3728	1/8"	\$33.50
3728	1/4"	34.00
3728	3/8"	35.00
3728	1/2"	35.50
3728	3/4"	46.00
3728	1"	54.75

#39 V Gouge



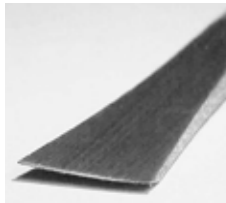
Item #	Size	Price
3739	1/4"	\$37.75
3739	3/8"	43.75
3739	1/2"	47.25
3739	3/4"	56.75

#45 V Gouge



Item #	Size	Price
3745	1/8"	\$36.75
3745	1/4"	37.75
3745	3/8"	43.75
3745	1/2"	47.25

#63 Fishtail Gouge



Item #	Size	Price
3763	1/4"	\$32.50
3763	3/8"	32.50
3763	1/2"	33.25
3763	3/4"	34.00
3763	1"	37.25

#65 Fishtail Gouge



Item #	Size	Price
3765	1/2"	\$33.50
3765	1"	38.00

#67 Fishtail Gouge



Item #	Size	Price
3767	1/2"	\$34.75
3767	3/4"	35.50

#93 Allongee Shaft



Item #	Size	Price
3793	1-1/2"	\$53.25
3793	2"	59.75
3793	2-1/2"	68.75

#95 Allongee Shaft



Item #	Size	Price
3795	1/4"	\$32.25
3795	1/2"	34.00
3795	1"	37.25
3795	1-1/2"	57.00
3795	2"	64.50
3795	2-1/2"	73.25

#97 Allongee Shaft



Item #	Size	Price
3797	1/4"	\$33.50
3797	3/4"	37.00
3797	1-1/2"	70.50
3797	2-1/2"	89.75

If you don't see a gouge you're looking for, just give us a call at (937) 845-0346 because, as indicated previously, we stock over 800 individual Taylor gouges.



Prices subject to change without notice.

Henry Taylor Tools

More fine Henry Taylor Tools from Sheffield, England



Palm Gouges



Our most popular Taylor 3/4" #3 palm gouge which we have referred to for years as the "Betsy Gouge" after one of our club members, Betsy Greer, because when customers saw Betsy carving with it, they had to have one.
#690000.....\$27.25



Palm Gouges:

#5 3/8"	#700080.....	\$22.25 *
#5 1/2"	#700081.....	23.25
#5 3/4"	#700082.....	27.25 *
#7 3/8"	#700083.....	22.25 *
#7 1/2"	#700084.....	27.50
#7 3/4"	#700085.....	28.00 *
#9 3/8"	#700086.....	22.25
#9 1/2"	#700087.....	27.50
#9 3/4"	#700088.....	28.00

* Not in stock. No longer manufactured at this time



Henry Taylor palm veiners:

#11 1.8"	#700200.....	\$21.50 *
#11 3/16"	#700201.....	21.50
#11 1/4"	#700202.....	21.50
#11 3/8"	#700203.....	22.25
#11 1/2"	#700204.....	24.50

* Not in stock. No longer manufactured at this time

Prices subject to change without notice.